



Rich Text Box Control

ROI Consul

Authored by: Kamran Javid

Contents

Introduction	3
Rich Text Functionality.....	4
Toolbar Functionality	4
Standard Toolbar Buttons.....	4
Toolbar Menu Items	5
Adding Rich Text to Your Customization	10
Product Roadmap	11
About ROI Consul	12

Introduction

This product is an EpiControl that allows the embedding and storage of Rich Text. It can be added to any Vantage, Epicor 9 or Epicor 10 Customization and supports both Progress and SQL Databases.

It allows the user to edit content as if they were using a product like Microsoft Word, or Notepad. Text can be formatted in similar ways and images added.

It has the standard EpiControl properties including but not limited to:

- EpiBinding
- EpiContextMenuKey
- EpiKeyField
- EpiLabel
- EpiRequired

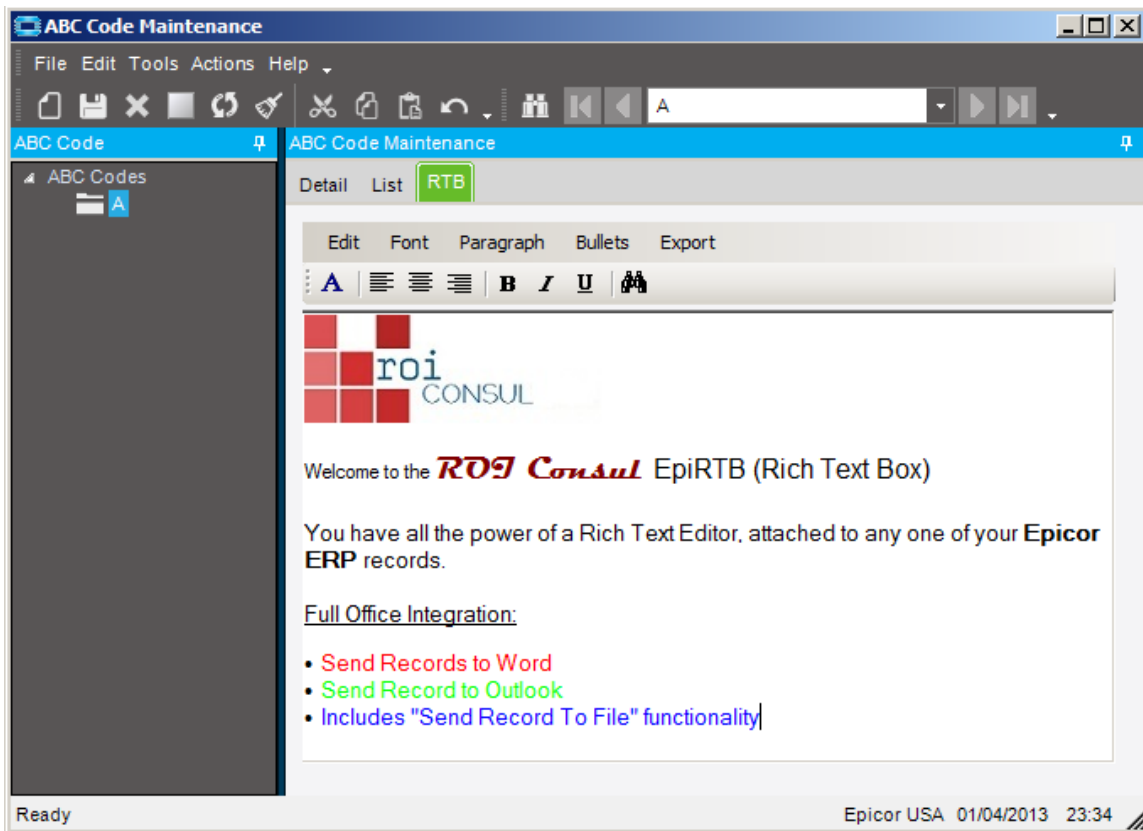
It can be added to forms in customization mode and properties set appropriately.

This product has full Microsoft Office integration. It gives you the ability to send the control content and record context to:

- Microsoft Outlook
- Microsoft Word

The record context is similar functionality to the standard EpiForm File -> Send -> Record to File. It exports a sysconfig file, which when associated to the Epicor ERP application will launch the appropriate form and also pre-load the record information.

Rich Text Functionality



Toolbar Functionality

Standard Toolbar Buttons

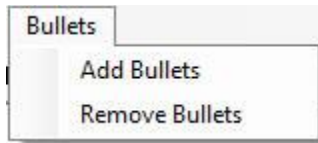


Standard functionality:

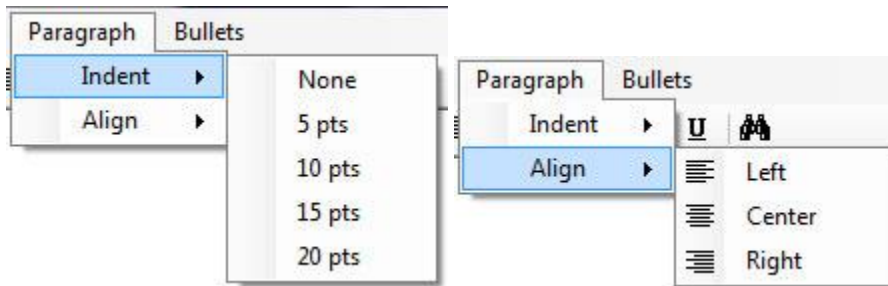
- Format font
- Format paragraph alignment
- Bold, Italic, Underline
- Find text

ROI Consul Epi Rich Textbox Control

Toolbar Menu Items



Add or remove a bulleted list

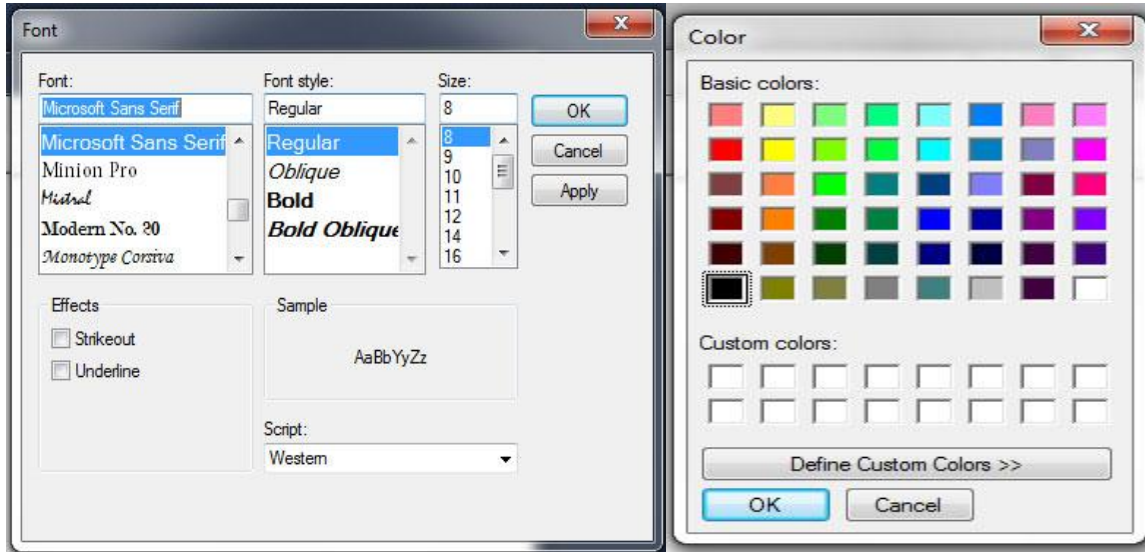


Indent and Align paragraph

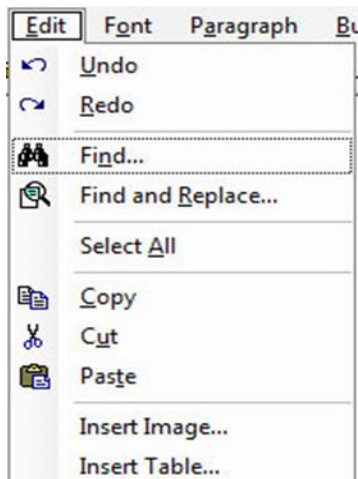


Format font

ROI Consul Epi Rich Textbox Control



Format font functionality



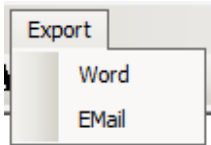
Edit menu, functionality as above. Including:

- Undo / Redo functionality
- Find / Find and Replace Text
- Select contents
- Cut / Copy / Paste
- Insert image
- Insert table

6 visit www.roiconsul.co.uk. Call 0330 043 1812 or email info@roiconsul.co.uk for more information.

ROI Consul Epi Rich Textbox Control

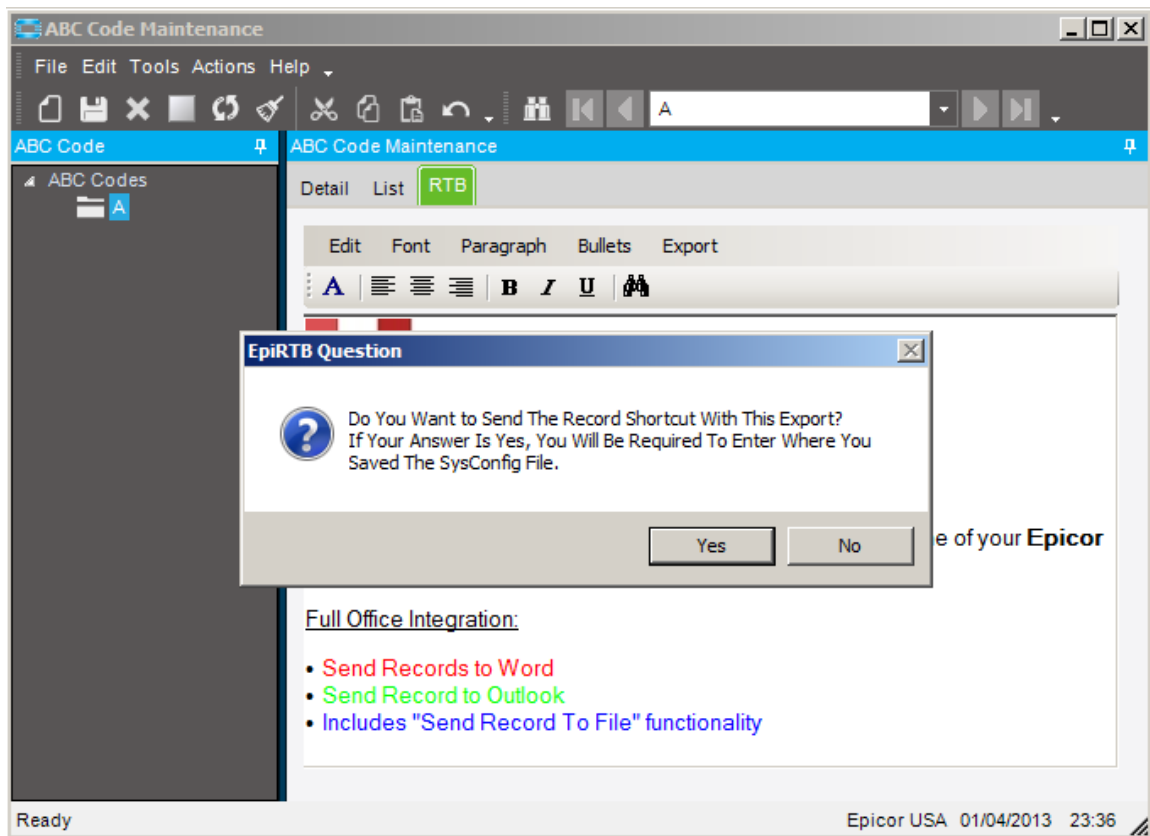
Export to Word



Launches Microsoft Word and preloads a document with the following identifiers:

- The form that the record was exported from
- The Epicor user who exported the record
- The Name and Value of the record key field information ie. Sales Order Number : 12345 or Purchase Order Number : 12345 etc

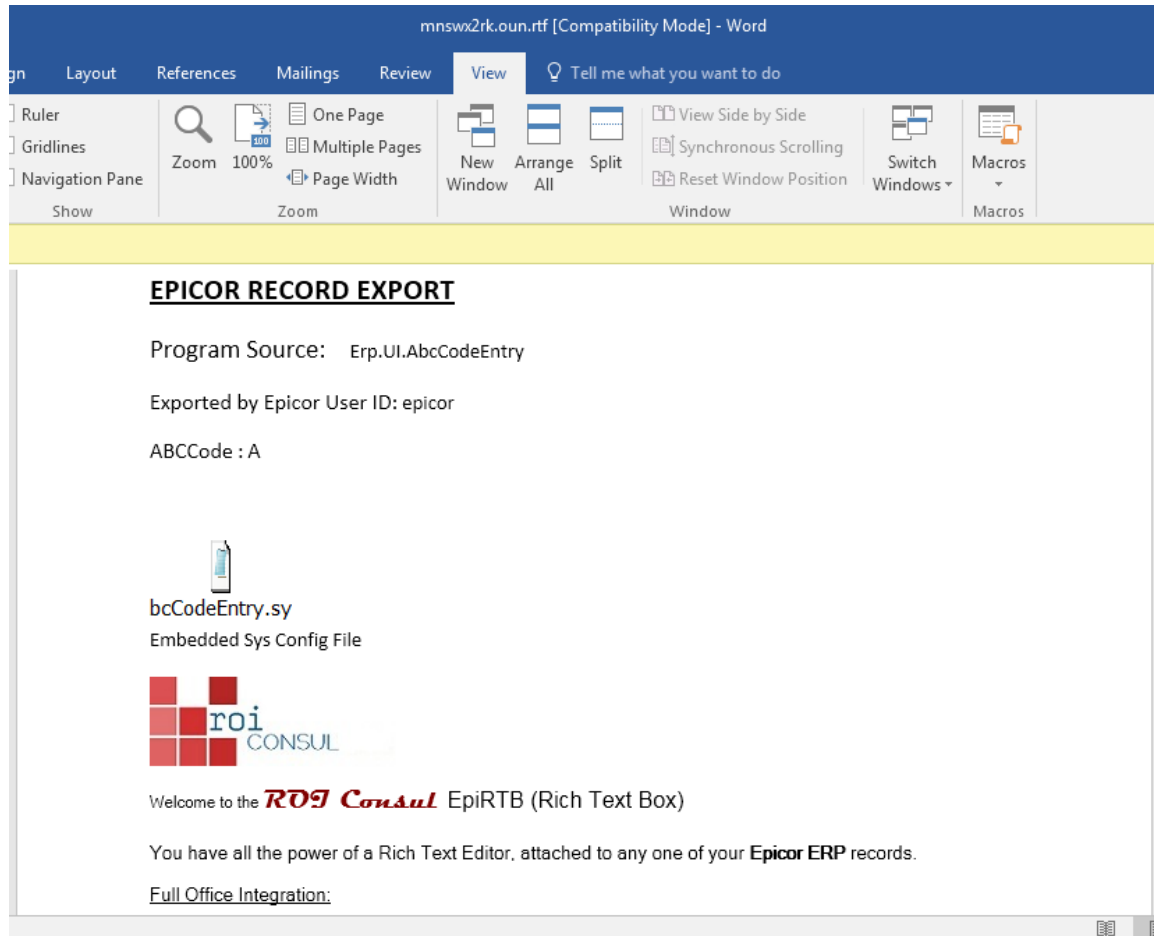
It will also include the SysConfig File as an embedded object within the document, if you have opted to do so.



7 visit www.roiconsul.co.uk. Call 0330 043 1812 or email info@roiconsul.co.uk for more information.

ROI Consul Epi Rich Textbox Control

The resulting export looks something like the screenshot below.

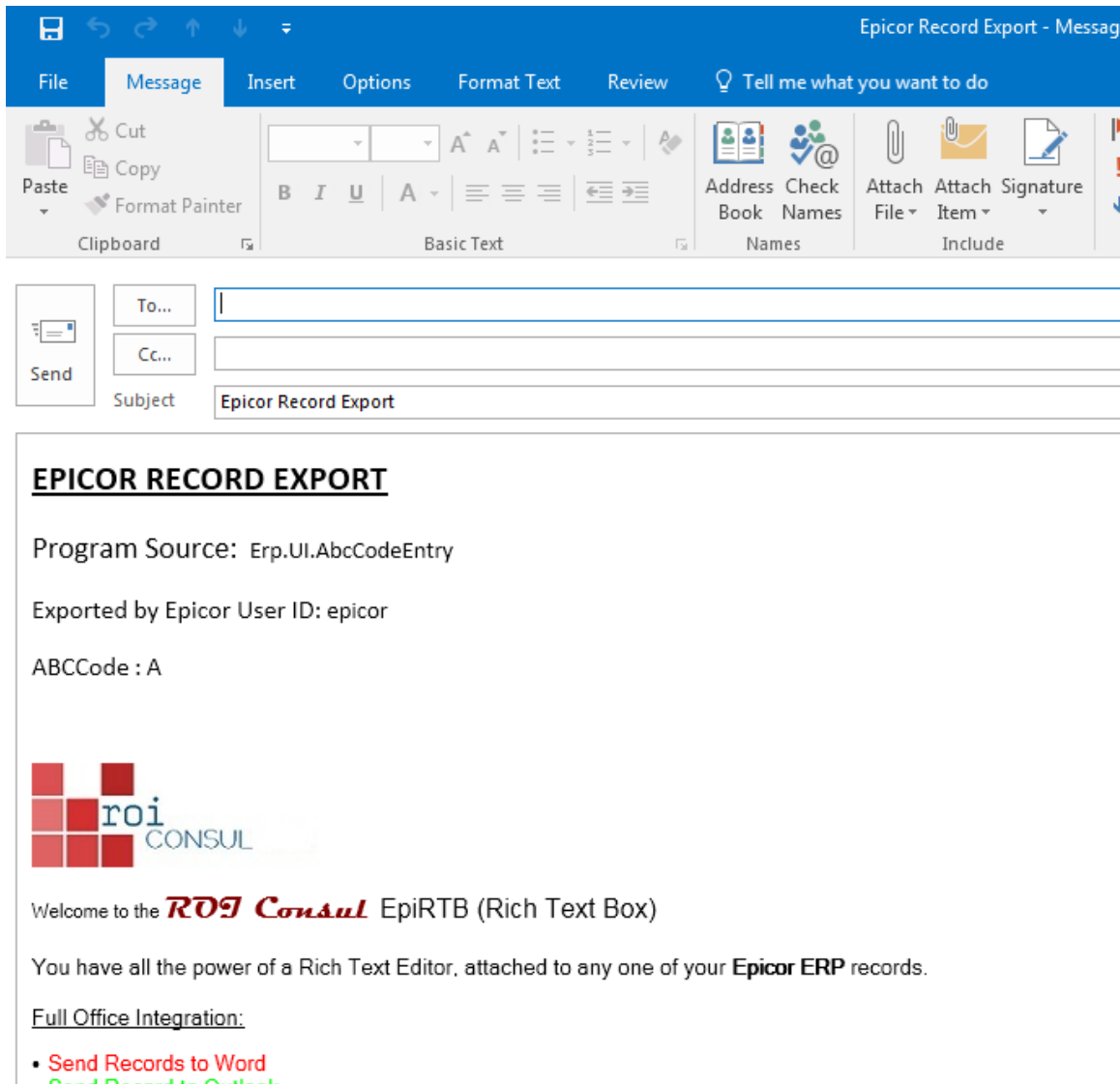


Export to Outlook

This functionality is exactly the same as above, but using an Outlook Email message.

The resulting export looks like that shown below.

ROI Consul Epi Rich Textbox Control




The screenshot displays an email client window titled "Epicor Record Export - Message". The interface includes a ribbon menu with tabs for "File", "Message", "Insert", "Options", "Format Text", and "Review". The "Message" tab is active, showing options like "Cut", "Copy", "Paste", and "Format Painter". The email body contains the following text:

EPICOR RECORD EXPORT

Program Source: Erp.UI.AbcCodeEntry

Exported by Epicor User ID: epicor

ABCCode : A



Welcome to the **ROI Consul** EpiRTB (Rich Text Box)

You have all the power of a Rich Text Editor, attached to any one of your **Epicor ERP** records.

Full Office Integration:

- **Send Records to Word**
- **Send Record to Outlook**

Adding Rich Text to Your Customization

```
18 using Ice.UI.FormFunctions;
19 using Ice.Lib.Framework;
20 using Ice.Lib.Searches;
21
22 using Ice.Lib.Framework.roiRTB;
23
24 public class Script
25 {
26     private roiEpiRTB cntrl;
27
28     public void InitializeCustomCode()
29     {
30         cntrl = new roiEpiRTB("AbcCode", oTrans);
31         cntrl.Location = new System.Drawing.Point(10, 10);
32         RTB.Controls.Add(cntrl);
33     }
34 }
```

Adding the control is easily done through Customization. Simply initialize it in code and then place it on the form, as above.

Once this is done you can easily change location and properties using the properties pages of the Epicor Customization Interface, rather than using code.

ROI Consul Epi Rich Textbox Control

Product Roadmap

Future releases of the product, planned for 2016 include, but are not limited to:

- Full integration with Epicor Customization Toolbox Pallet
 - Drag and Drop functionality from toolbox

ROI Consul Epi Rich Textbox Control

About ROI Consul

Mission Statement: To provide our customers with robust IT consultancy that gives a measurable return on their investment in us.

ROI Consul focus is as a System Architect, Business Analysis & Design, Software Delivery, Reporting and Integration Consultancy. We pride ourselves on proven skills in these areas.

Microsoft Certified experts with accreditation's in Business Analysis, Project Management and an in-depth experience. We can deconstruct your ERP, CRM, Web Solutions, Supply Chain or other internal systems to provide impartial advice on the best approach to integrations, customisations, operational and management reporting solutions, for your business.

We are also specialist in Vantage, Epicor 9 and Epicor 10 Technology, Including Epicor SDK.

ROI Consul can also provide you with reporting outside of the standard set provided by your system in a technology that suits you. Should your system operate using Crystal Reports or SQL Server Reporting Services, we can provide you with a consultation and then display your KPI's in a format that you understand.

With an in-depth understanding of the SDLC (Software Development Lifecycle) and a proven ability to speak to customers in their own language, globally. ROI Consul only work on solutions that we can prove and that are deliverable. All projects are fully managed, documented and tested using our own internal standards, although we will gladly work within your organizations quality and documentation parameters as required.

ROI Consul is a company that prides itself on being able to translate each business process into a technical implementation that is transparent and efficient for it's stakeholders. Our role is to understand how the business user interacts with the system, surrounding technology, the system itself and provide a solution that allows the user to do their job in the most efficient, effective and robust manner. This ultimately streamlines the organization, improves employee efficiency and makes life easy for all concerned!

12 visit www.roiconsul.co.uk. Call 0330 043 1812 or email info@roiconsul.co.uk for more information.

ROI Consul Epi Rich Textbox Control

We can integrate your systems into a synergy in which you can reduce cost and time per click, report on daily company activity effectively, as well as provide reporting for historical analysis, KPI Monitoring and improvement strategy.

If your organization uses Epicor EPM, including Performance Canvas, or are planning to do so, we can offer you expert level assistance. This includes EPM Server, Performance Canvas and associated Content packs. All EPM areas are a specialist topic for ROI Consul, having unrivalled and demonstrable project experience of this vertical. We can also offer Epicor SDK Training.

ROI Consul specialize in the following areas:

- Epicor ERP Consultancy
 - SDK and Black-Belt Customisation
 - Epicor Service Level Agreements and Service Contracts
- Business Process Review, 'As-Is' and 'To-Be' Solicitation and Documentation
- Business Analysis
- Software Architecture
- Functional and Technical Design
- Project Management
- Documentation at all levels
- System Integration
- Online and Classroom Training

Please visit www.roiconsul.co.uk, Call 0330 043 1812 or send an email to info@roiconsul.co.uk for more information.