

ICE Deployer

ROI Consul

Authored by: Kamran Javid

Contents

Introduction	3
Product Functionality.....	4
Product Roadmap	9
About ROI Consul	10

ROI Consul ICE Deployer

Introduction

This product is an Epicor style form, that once attached to the Epicor 10 menu structure, allows you to install ICE Framework Customizations.

It currently supports the following types of customization.

- Dashboard
- BPM
 - Method Directives
 - Data Directives
- BAQ
- Form Customization
- Menu Items
- Report Data Definitions
- Report Styles
- SSRS Reports
- Crystal Reports

It is anticipated that the forthcoming release will include support for SDK enhancements including:

- Server Assemblies and Contracts
- Client Assemblies and Contracts
- SQL Schema Scripts

ROI Consul ICE Deployer

Product Functionality

The application is developed in such a way that it allows a completely granular installation of each ICE Framework customization type. You can choose to import only the customizations that you need.

It has an advantage over the solution manager in that you can store your source in their native separate file formats and only import what you need to, and when you need to do it.

Seasoned software consultants will know that this is the best approach for source and version control.

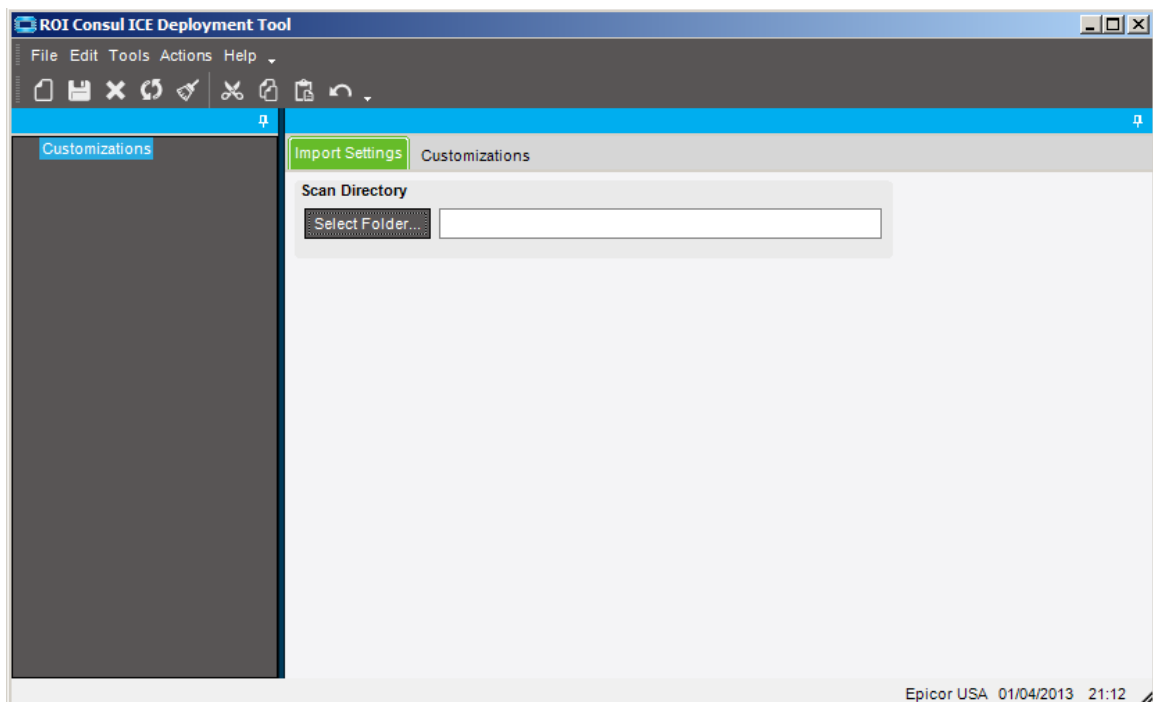


Figure 1: Blank Interface

ROI Consul ICE Deployer

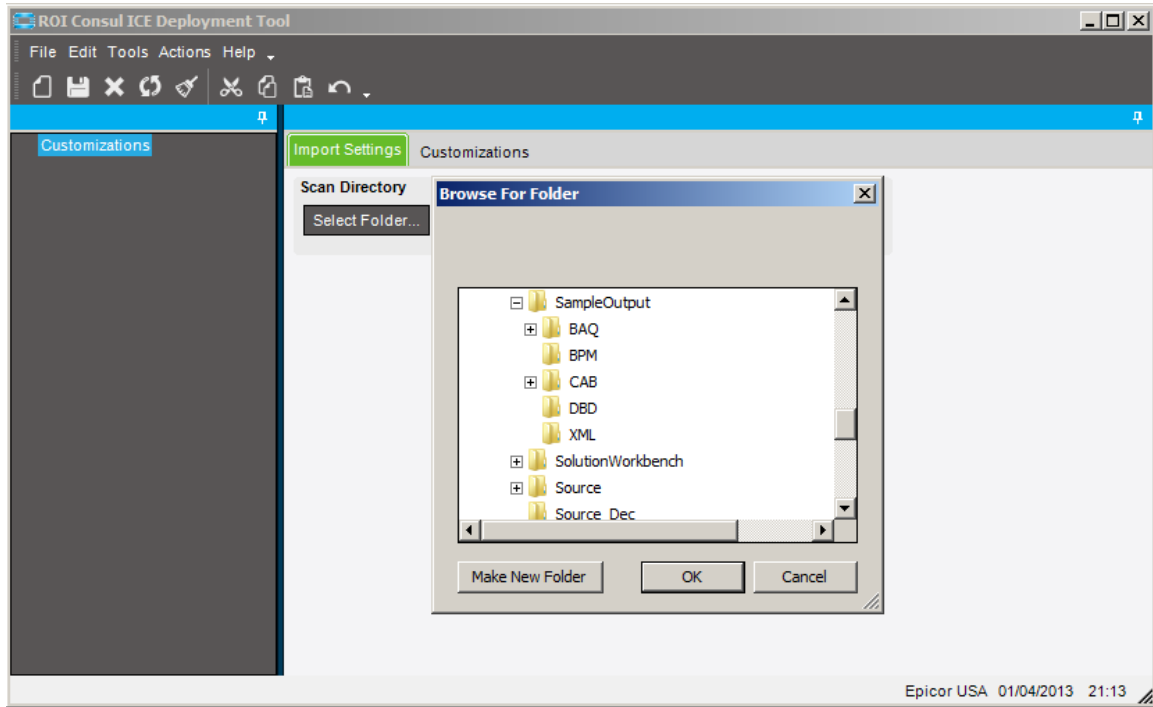


Figure 2: Loading Your Customizations

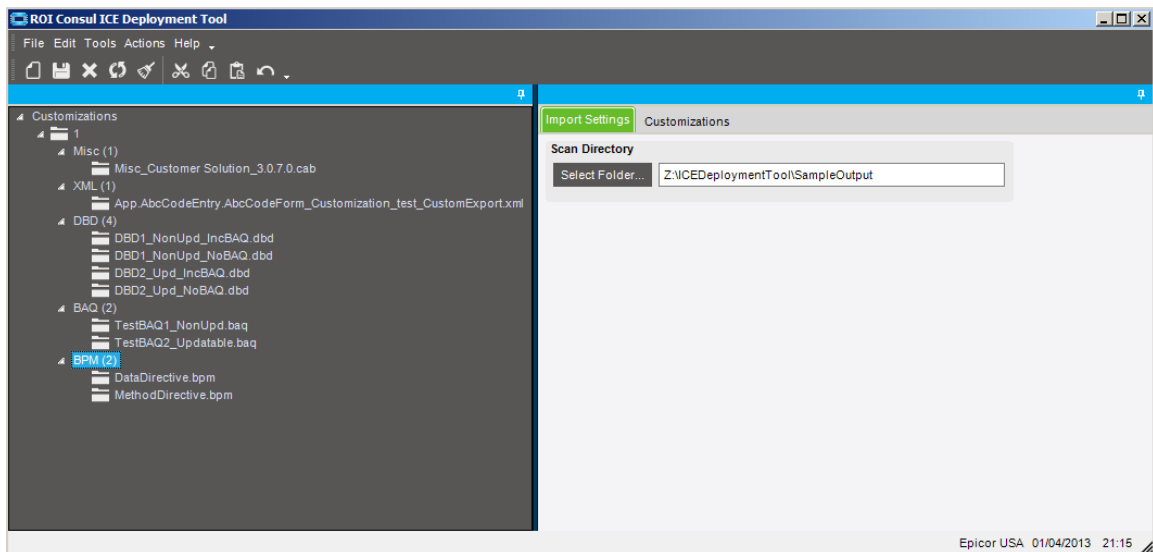


Figure 3: The Loaded Customizations, Showing the TreeView

5 visit www.roiconsul.co.uk. Call 0330 043 1812 or email info@roiconsul.co.uk for more information.

ROI Consul ICE Deployer

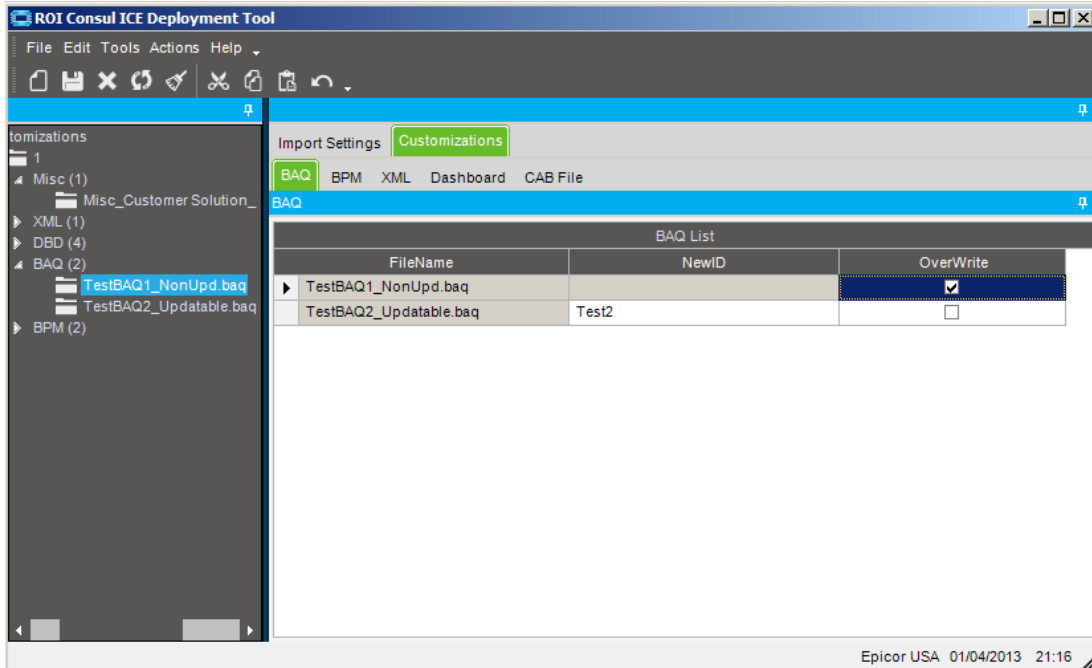


Figure 4: Load as Many Separate BAQ Files as Necessary

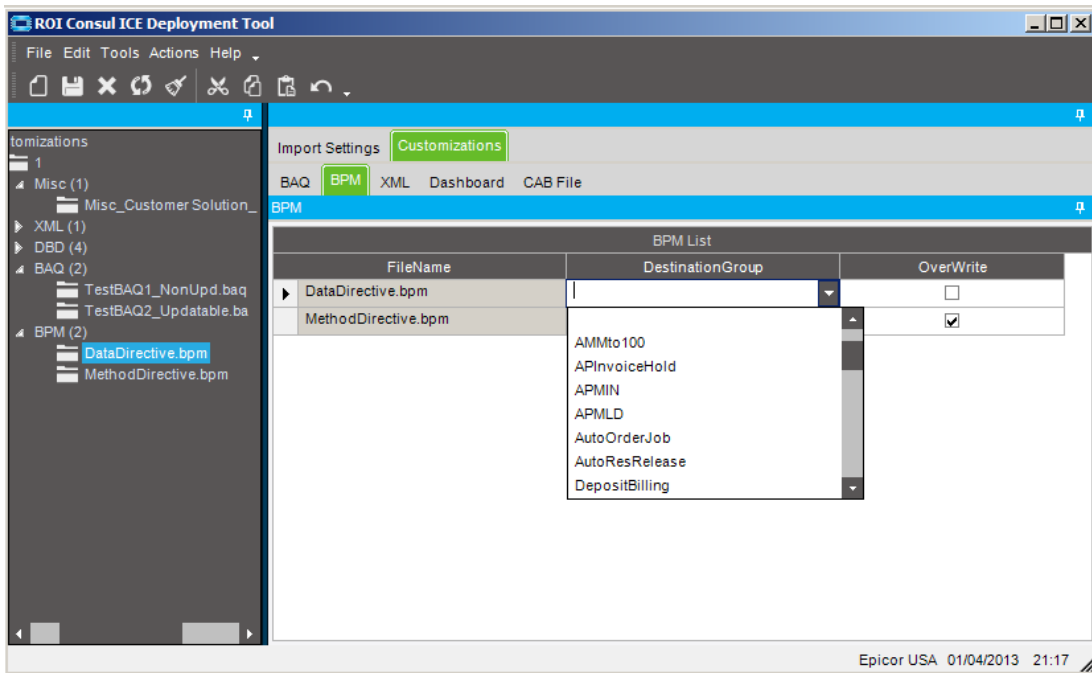


Figure 5: Multiple Data and Method Directive Source Files Supported

6 visit www.roiconsul.co.uk. Call 0330 043 1812 or email info@roiconsul.co.uk for more information.

ROI Consul ICE Deployer

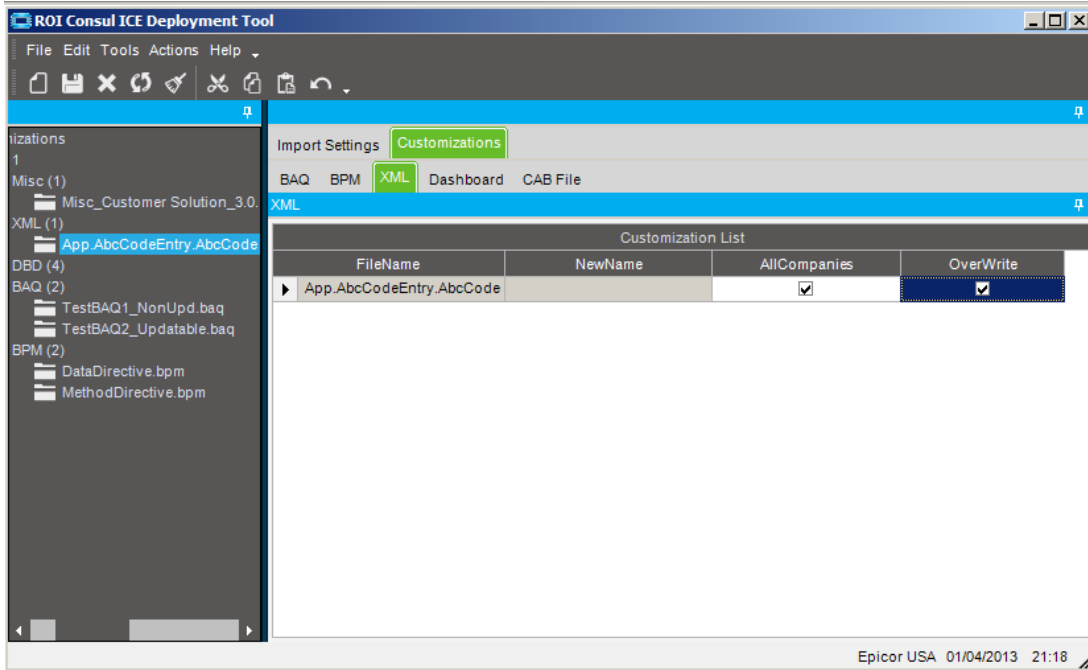


Figure 6: Granular Customization Import Allows Focused Source Control

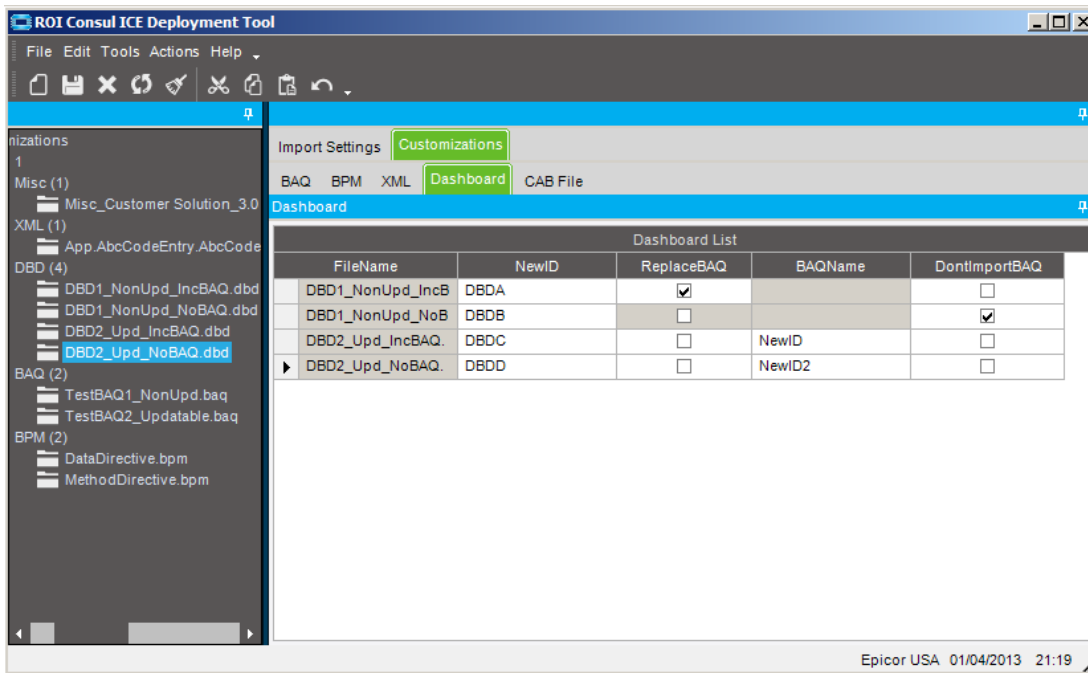


Figure 7: Standard and Updatable Dashboards Supported

7 visit www.roiconsul.co.uk. Call 0330 043 1812 or email info@roiconsul.co.uk for more information.

ROI Consul ICE Deployer

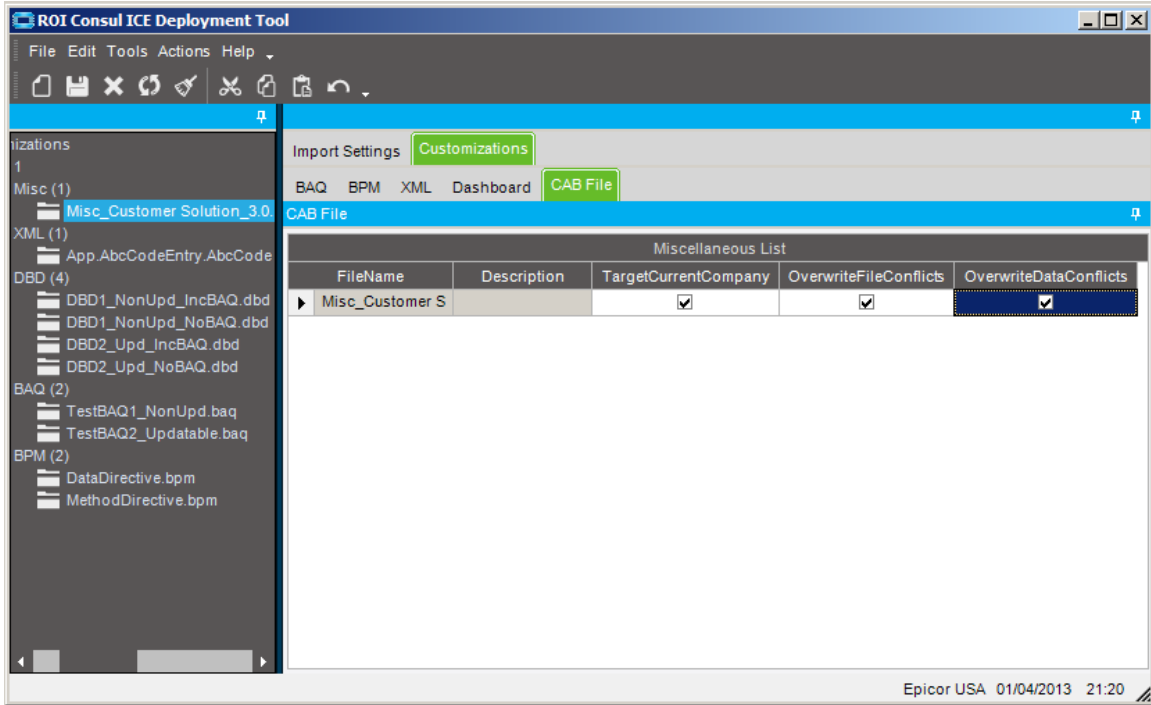


Figure 8: CAB Solutions Support Import of Report Data Definitions, Report Styles and Associated RDL / RPT Files

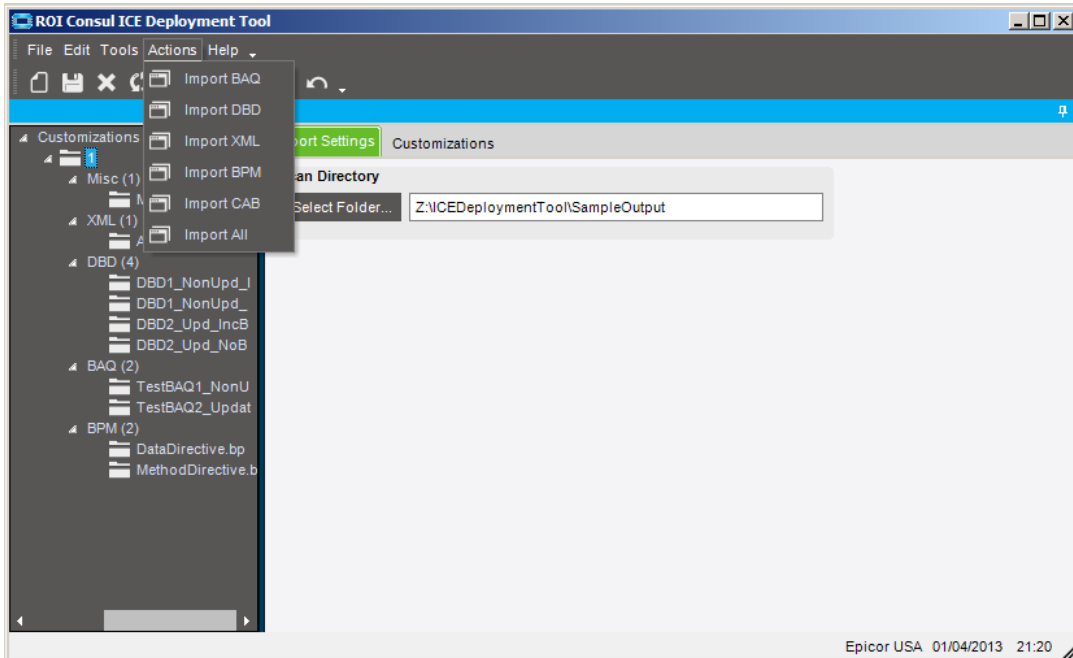


Figure 9: Install Each Framework Item Separately

8 visit www.roiconsul.co.uk. Call 0330 043 1812 or email info@roiconsul.co.uk for more information.

ROI Consul ICE Deployer

Product Roadmap

Future releases of the product, planned for 2016 include, but are not limited to:

- SDK Support
 - SQL Schema Creation
 - Deployment of Server Assemblies
 - Script Generation for Client Assembly Copy + Distribution Interface
- TFS Integration

ROI Consul ICE Deployer

About ROI Consul

Mission Statement: To provide our customers with robust IT consultancy that gives a measurable return on their investment in us.

ROI Consul focus is as a System Architect, Business Analysis & Design, Software Delivery, Reporting and Integration Consultancy. We pride ourselves on proven skills in these areas.

Microsoft Certified experts with accreditation's in Business Analysis, Project Management and an in-depth experience. We can deconstruct your ERP, CRM, Web Solutions, Supply Chain or other internal systems to provide impartial advice on the best approach to integrations, customisations, operational and management reporting solutions, for your business.

We are also specialist in Vantage, Epicor 9 and Epicor 10 Technology, Including Epicor SDK.

ROI Consul can also provide you with reporting outside of the standard set provided by your system in a technology that suits you. Should your system operate using Crystal Reports or SQL Server Reporting Services, we can provide you with a consultation and then display your KPI's in a format that you understand.

With an in-depth understanding of the SDLC (Software Development Lifecycle) and a proven ability to speak to customers in their own language, globally. ROI Consul only work on solutions that we can prove and that are deliverable. All projects are fully managed, documented and tested using our own internal standards, although we will gladly work within your organizations quality and documentation parameters as required.

ROI Consul is a company that prides itself on being able to translate each business process into a technical implementation that is transparent and efficient for it's stakeholders. Our role is to understand how the business user interacts with the system, surrounding technology, the system itself and provide a solution that allows the user to do their job in the most efficient, effective and robust manner. This ultimately streamlines the organization, improves employee efficiency and makes life easy for all concerned!

10 visit www.roiconsul.co.uk. Call 0330 043 1812 or email info@roiconsul.co.uk for more information.

ROI Consul ICE Deployer

We can integrate your systems into a synergy in which you can reduce cost and time per click, report on daily company activity effectively, as well as provide reporting for historical analysis, KPI Monitoring and improvement strategy.

If your organization uses Epicor EPM, including Performance Canvas, or are planning to do so, we can offer you expert level assistance. This includes EPM Server, Performance Canvas and associated Content packs. All EPM areas are a specialist topic for ROI Consul, having unrivalled and demonstrable project experience of this vertical. We can also offer Epicor SDK Training.

ROI Consul specialize in the following areas:

- Epicor ERP Consultancy
 - SDK and Black-Belt Customisation
 - Epicor Service Level Agreements and Service Contracts
- Business Process Review, 'As-Is' and 'To-Be' Solicitation and Documentation
- Business Analysis
- Software Architecture
- Functional and Technical Design
- Project Management
- Documentation at all levels
- System Integration
- Online and Classroom Training

Please visit www.roiconsul.co.uk, Call 0330 043 1812 or send an email to info@roiconsul.co.uk for more information.